

Traverse City ↔ Charlevoix Trail Acme through Elk Rapids Preliminary Design

Public Open House
February 27, 2019

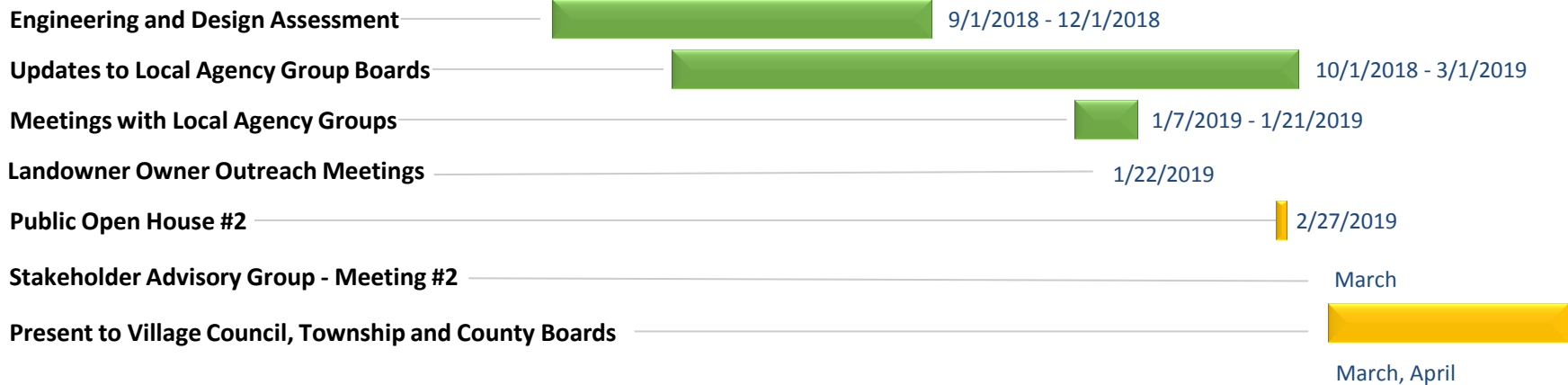
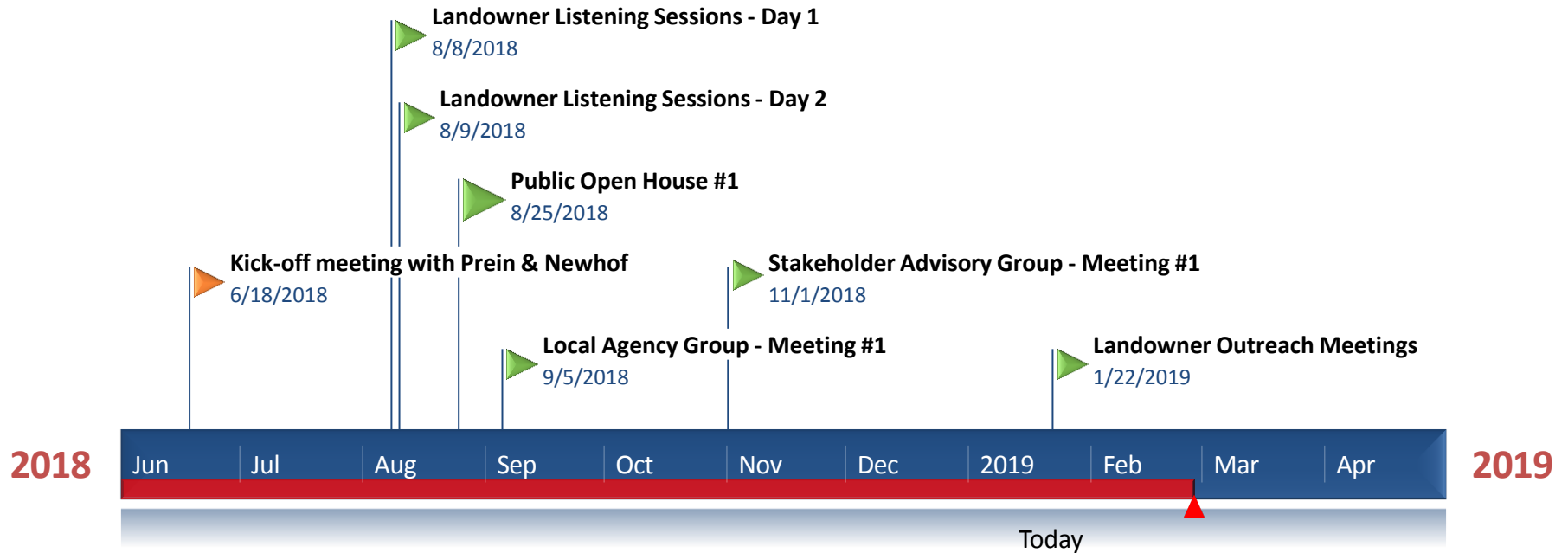
Northwest Lower Michigan Trails



- TART Trails
- North Country Trail
- Little Traverse Wheelway
- North Eastern State Trail
- Rogers City Spur
- Midland to Mackinac Trail
- North Central State Trail
- Alpena Path
- Chippewa Hills Pathway
- North Western State Trail
- Huron Sunrise Trail
- Anishinaabe
- High Country Pathway
- Alpena to Hillman
- Hoist Lakes Foot Travel Area
- Shore to Shore Trail
- Reid Lake Foot Travel Area
- Grayling Area Bike Path



TC↔CHX Trail – Preliminary Design Timeline: Acme to Elk Rapids



Today: Sharing What We've Learned

Assessment and Input

Review Alignments/Options

Change in Scope – Village of Elk Rapids North

Open House Format

5:30 – 5:40 PM

Sign-In Table/Welcome

5:40 – 6:00 PM

Presentation

TART Trails and Prein & Newhof

6:00 – 7:30 PM

Open House Stations

Maps, Route Reviews, and Comment Cards

Guidelines for Participating at Stations

- Review Maps and Route Reviews
- Respect Others
- Ask Questions/Speak with Staff and Consultants
- Fill Out Comment Cards
- Give Honest Feedback
- Be Specific
- Return Comment Cards to Staff or Labeled Drop Boxes